

## PROFILE OF SIBLEY COUNTY

### BRIEF HISTORY OF COUNTY

Sibley County is located in south-central Minnesota. The population at the 2000 census was 15,356. The county seat is Gaylord.

It is impossible to give a detailed and reliable history of the beginning of Sibley County, because the records were destroyed by fire October 18, 1863. What data is available for that period is the result of conversations with several of the early settlers. If errors exist, as they undoubtedly do, we must take into consideration the difficulty of giving, from memory alone, a correct account of those years.

This story of Sibley County is the result of the diligent work of citizens of each township, city and village of the county. The committee had many obstacles to overcome because of the loss of records by fire and otherwise.

The county was established by an act of the Legislature, March 5, 1853. The first organizational meeting was held in the upper floor of the old Valley House in Henderson. The County Officers elected, as far as can be ascertained were: Joseph R. Brown, Register of Deeds; John Clark, Sheriff; C. H. Drew, Surveyor; Nicolas Hilger, Auditor; Henry Poehler, Treasurer; John H. Miller, Judge of Probate; John Miller, A. Walker, and Conrad Herrman, County Commissioners.

The boundaries of the county were then deprived as follows: Beginning at the northwest corner of Hennepin County, thence up the north fork of the Crow River to its second fork, thence along the line of said county to the place of beginning. These boundaries were changed several times. The County was reduced to its present limits bounded by Renville, McLeod and Carver Counties on the north; Nicollet County on the south; and Carver, Scott and LeSueur Counties on the east.

**Source: County's website**

### QUICK FACTS OF COUNTY

**Website:** <http://www.co.sibley.mn.us/>

Facts	Sibley County	Minnesota
Land area, 2010 (square miles)	588.78*	79,626.74*
Average Persons per square mile, 2010	25.9*	66.6*
Number of Cities	7**	854***
Number of Townships	17**	1,784***

#### Sources:

\*U.S. Census Bureau: State and County Quick Facts, 2012)

\*\*Number of Cities and Townships in Sibley County (Minnesota Department of Administration)

\*\*\*Number of Townships in Minnesota (Minnesota Association of Townships)

## PROFILE ISSUES COVERED

### ❖ QUICK FACTS OF COUNTY

#### ❖ POPULATION OF COUNTY

- Population Trend and Projections (2000-2040)
- Population Projection by Age Cohorts (2010- 2020)
- Population of Cities In Sibley County (2006- 2011)
- Population of Townships In Sibley County (2006- 2011)
- Key Highlights

### ❖ SELECTED DEMOGRAPHIC CHARACTERISTICS

- Projection of County's Household Types (2010-2020)
- Ethnic Composition of County's Population (2000 – 2011)
- Education Attainment (2012)
- Key Highlights

### ❖ COUNTY'S ECONOMIC OUTLOOK

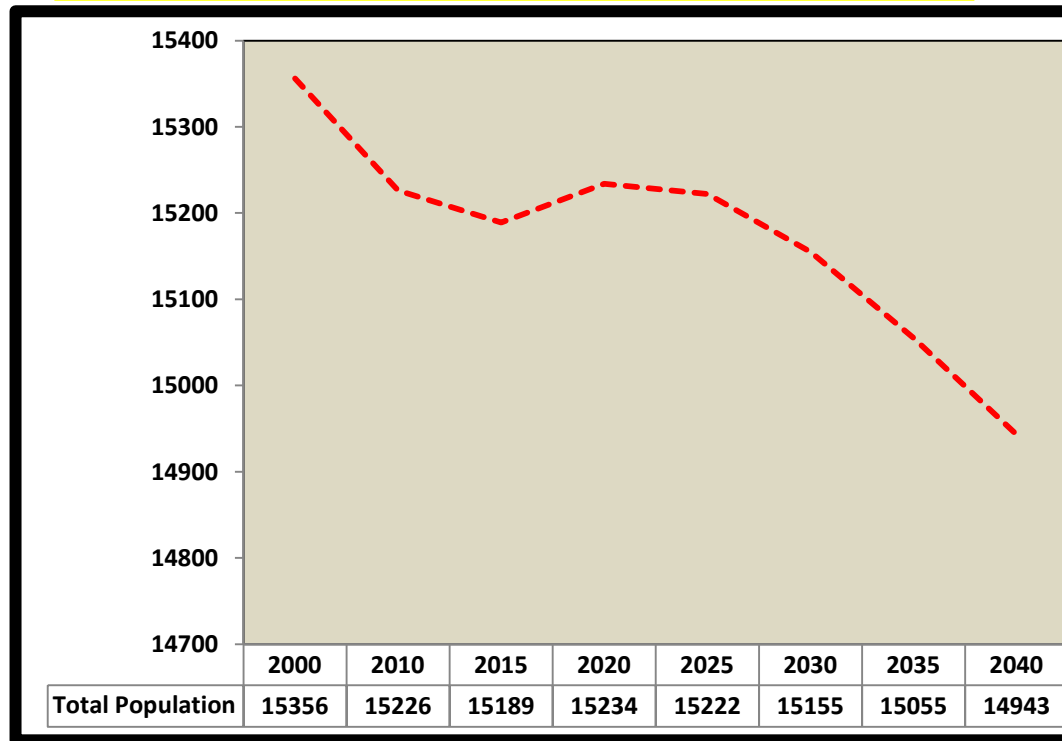
- County's Labor Force Outlook (2005-2035)
- County's Labor Force Outlook by Age Cohorts (2005-2035)
- Comparing Unemployment Rates for Sibley County, Region Nine and Sate (2000 – 2012)
- Trend in County's Per Capita Income (2000-2011)
- Key Highlights

### ❖ COUNTY'S HOUSING PROFILE

- Housing Units: Total, Owner and Renter Units (2000-2011)
- Trend in County's Homeownership Rate (1990-2011)
- Other Housing Characteristics (2000-2011)
- Housing Expenditure for Sibley County (2012)
- Key Highlights

# POPULATION OF COUNTY

## POPULATION TREND AND PROJECTIONS (2000-2040)



Data Source: MN State Demographic Center, 2012

## KEY HIGHLIGHTS

- ❖ Except for 2020, the County's population is projected to decline every five years from 2010 to 2040. But the maximum rate of decrease is expected to be 0.7 per cent.
- ❖ Population less than 19 years are expected to account for 28 per cent of the County's projected population increase in 2020. This only represents 2 per cent increase in the less than 19 years population group (comparing the 2010 and 2020 populations).
- ❖ All cohort groups above 65+ cohort are expected to increase, meaning around 20 per cent of the County's population in 2020 will be 65+ years old. This number is 30 per cent more of what was recorded in 2010 implying possible increase in demand for Senior Housing and health care needs in the County.

## POPULATION OF CITIES IN SIBLEY COUNTY (2006- 2011)

City	2006	2007	2008	2009	2010	2011
Arlington	2,110	2,098	2,091	2,066	2,233	2,231
Gaylord	2,268	2,274	2,249	2,230	2,305	2,313
Gibbon	781	779	769	757	772	773
Green Isle	450	510	508	502	559	560
Henderson	947	946	940	925	886	887
New Auburn	507	506	502	493	456	451
Winthrop	1,354	1,330	1,315	1,292	1,399	1,400

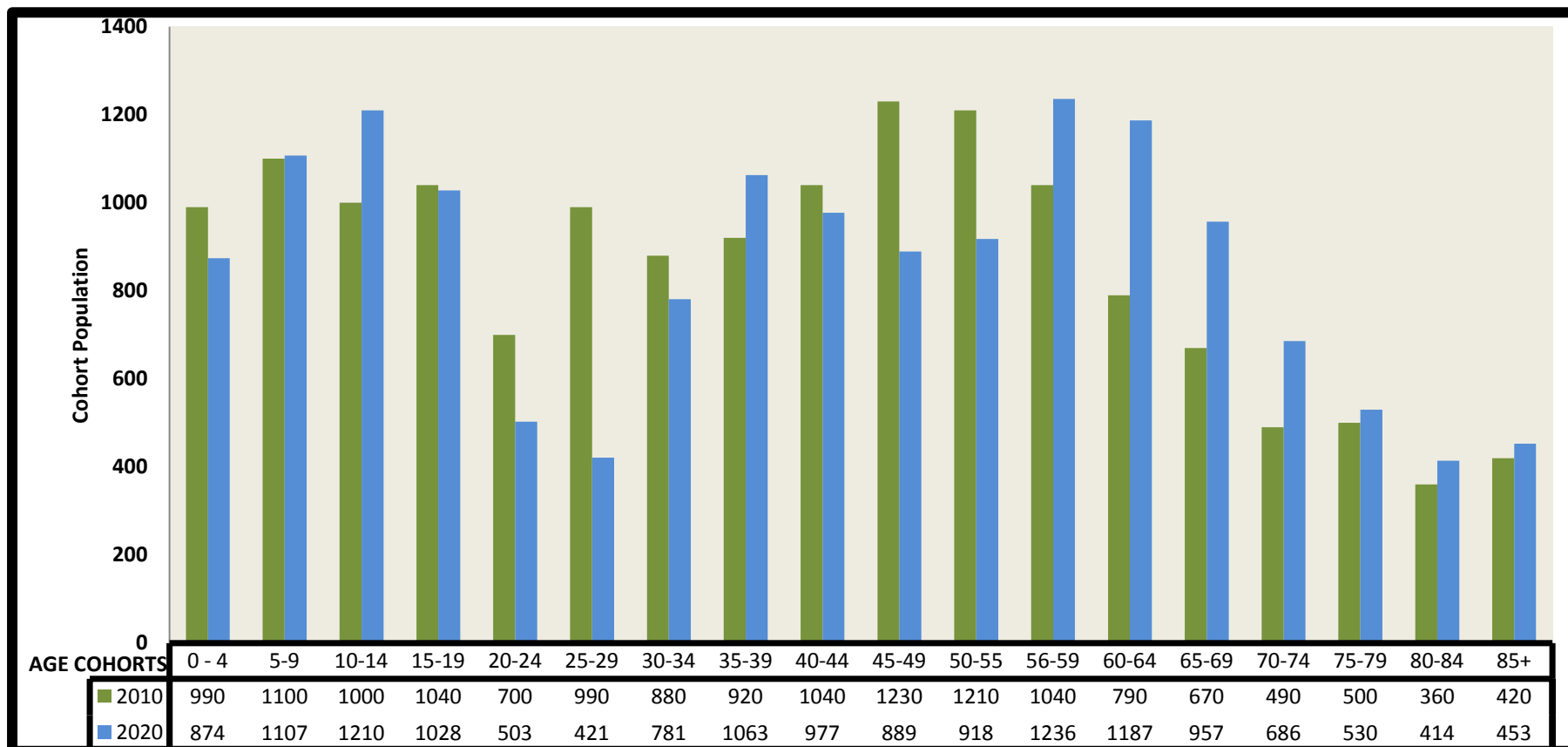
Data Source: MN State Demographic Center, 2012

## POPULATION OF TOWNSHIPS IN SIBLEY COUNTY (2006- 2011)

Township	2006	2007	2008	2009	2010	2011
Alfsborg	351	349	338	337	323	318
Arlington	547	547	533	530	543	539
Bismarck	337	317	300	296	314	316
Cornish	237	227	240	252	28	30
Dryden	260	258	252	256	287	288
Faxon	640	641	637	649	701	705
Grafton	247	242	238	244	238	239
Green Isle	503	499	494	494	524	520
Henderson	728	728	716	714	728	729
Jessenland	472	473	466	465	444	439
Kelso	337	340	334	328	292	292
Moltke	310	315	307	304	279	273
New Auburn	463	459	447	443	418	411
Severance	319	314	306	301	253	246
Sibley	343	338	333	327	255	253
Transit	309	310	302	296	276	274
Washington Lake t	486	485	478	487	498	495

Data Source: MN State Demographic Center, 2012

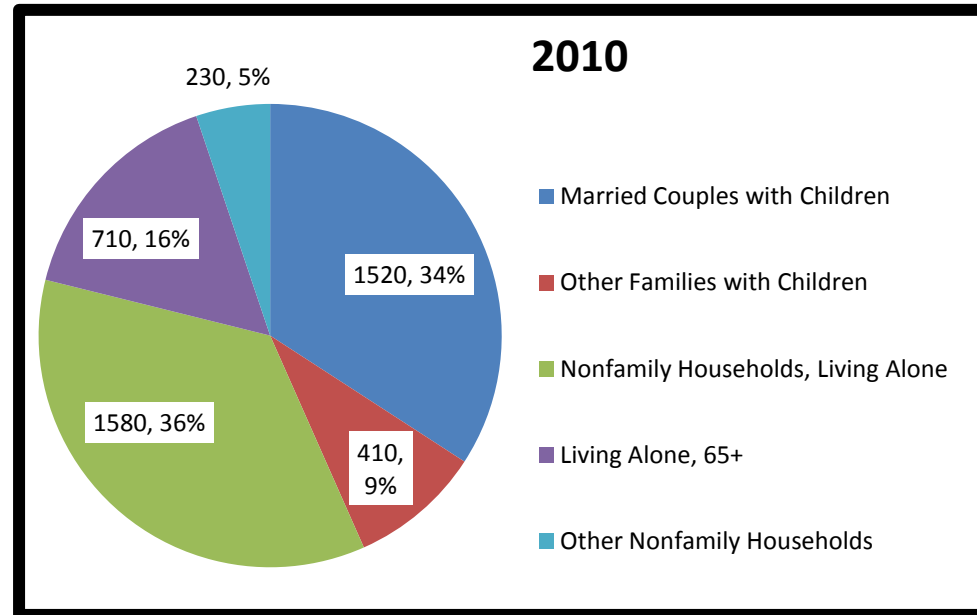
## POPULATION PROJECTION BY AGE COHORTS (2010- 2020)



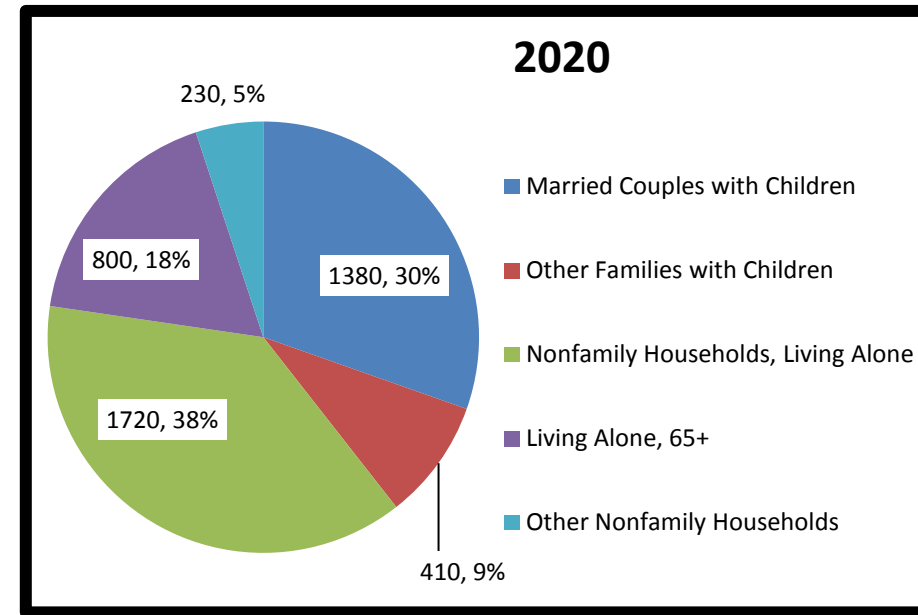
Data Source: MN State Demographic Center, 2012

## SELECTED DEMOGRAPHIC CHARACTERISTICS

### PROJECTION OF COUNTY'S HOUSEHOLD TYPES (2010- 2020)



Data Source: MN State Demographic Center, 2012



Data Source: MN State Demographic Center, 2012

#### KEY HIGHLIGHTS

- ❖ With projected decline of 9.2 per cent in the number of “Married Couples with Children” and 8.7 per cent increase in “Non-family households living alone” in 2020, there might be potential increase in demand for single family housing in the County.
- ❖ The population of “Hispanic or Latino”, “Asian alone” and “Black or African American alone” ethnic groups have significantly increased since 2000. In all, the percentage composition of minority ethnic groups (all except “white alone”) in the county’s population has increased from 6.6 per cent (in 2000) to 9 per cent (in 2011).
- ❖ Less than half (44 per cent) of the county’s 25+ population can be categorized as highly skilled labor force based on their education attainment (i.e. having attained more than high school degree).

### ETHNIC COMPOSITION OF COUNTY'S POPULATION (2000 – 2011)

Ethnic Group	2000	2005-2009	2010	2011
White alone	14,337	13,618	13,863	13,844
Hispanic or Latino	834	1,102	1,004	1,046
Asian alone	50	83	97	103
Black or African American alone	15	13	24	80
American Indian and Alaska Native alone	33	16	21	6
Native Hawaiian and Other Pacific Islander alone	0	0	0	0
Some Other Race alone	14	42	14	13
Two or more races	73	127	196	127

Data Source: US Census Bureau, 2012

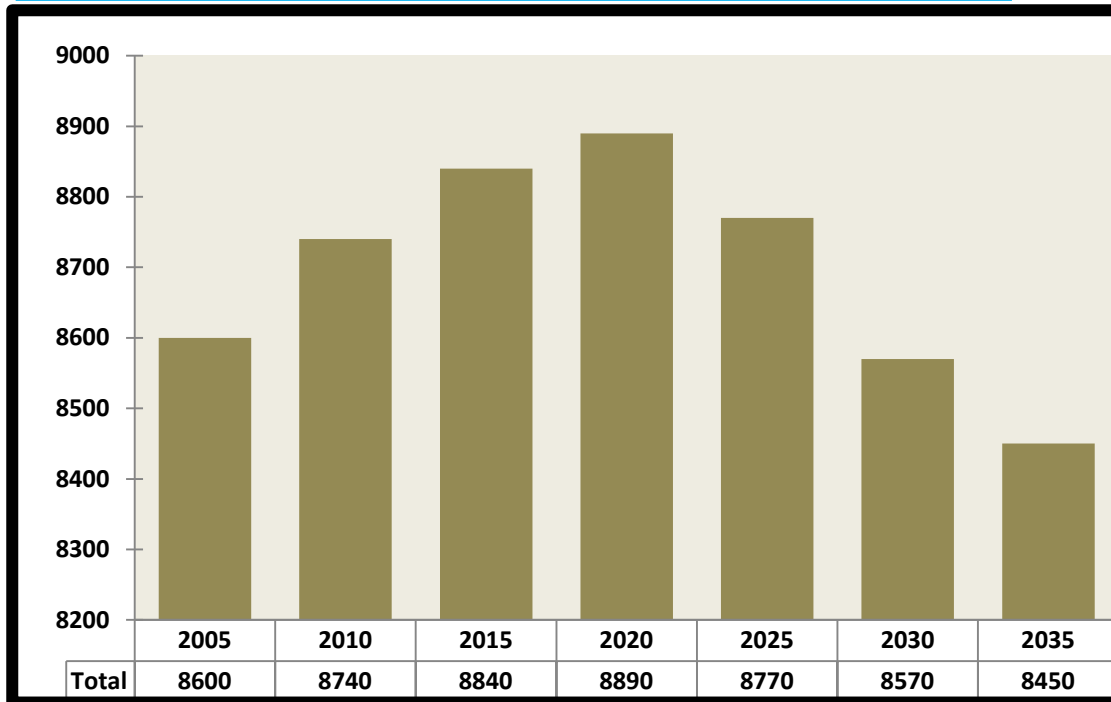
### EDUCATION ATTAINMENT (2012)

	TOTAL	%
<b>Population Age 25+</b>	<b>10,132</b>	
< Grade 9	723	7.14
Grade 9-12	645	6.37
High School	4,248	41.93
Some College	2,278	22.48
Assoc Degree	893	8.81
Bach Degree	1,063	10.49
Grad Degree	282	2.78

Data Source: MN Department of Employment and Economic Development (MN DEED),

## COUNTY'S ECONOMIC OUTLOOK

### COUNTY'S LABOR FORCE OUTLOOK (2005-2035)

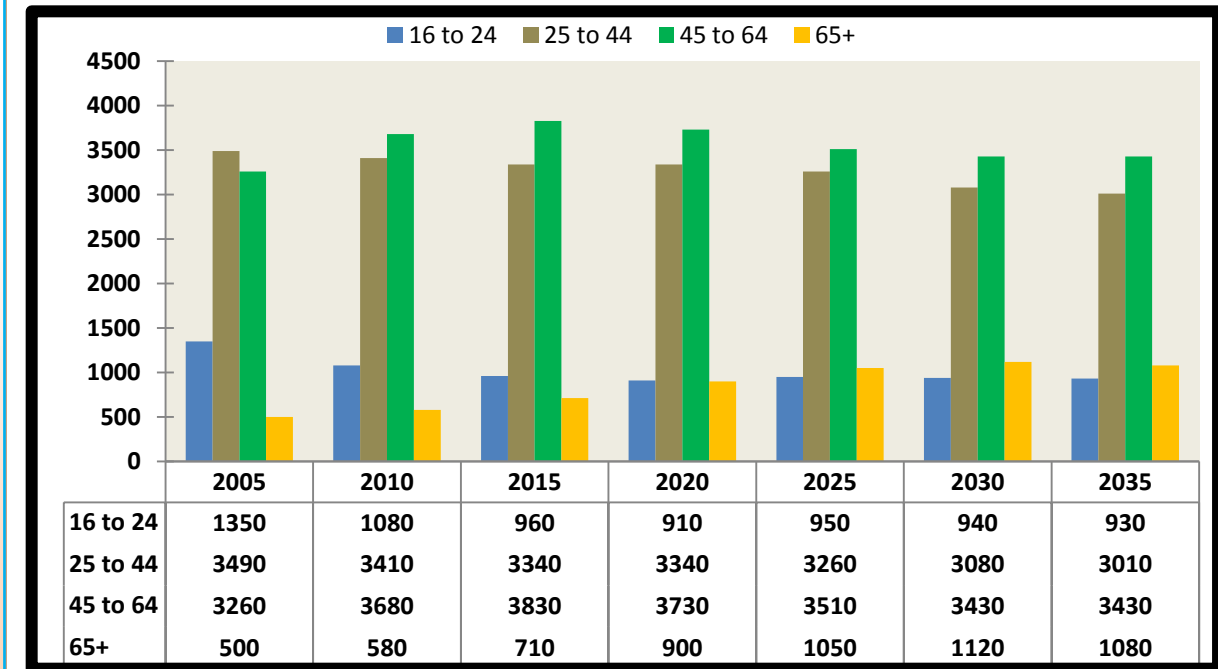


Data Source: MN DEED, 2012

### KEY HIGHLIGHTS

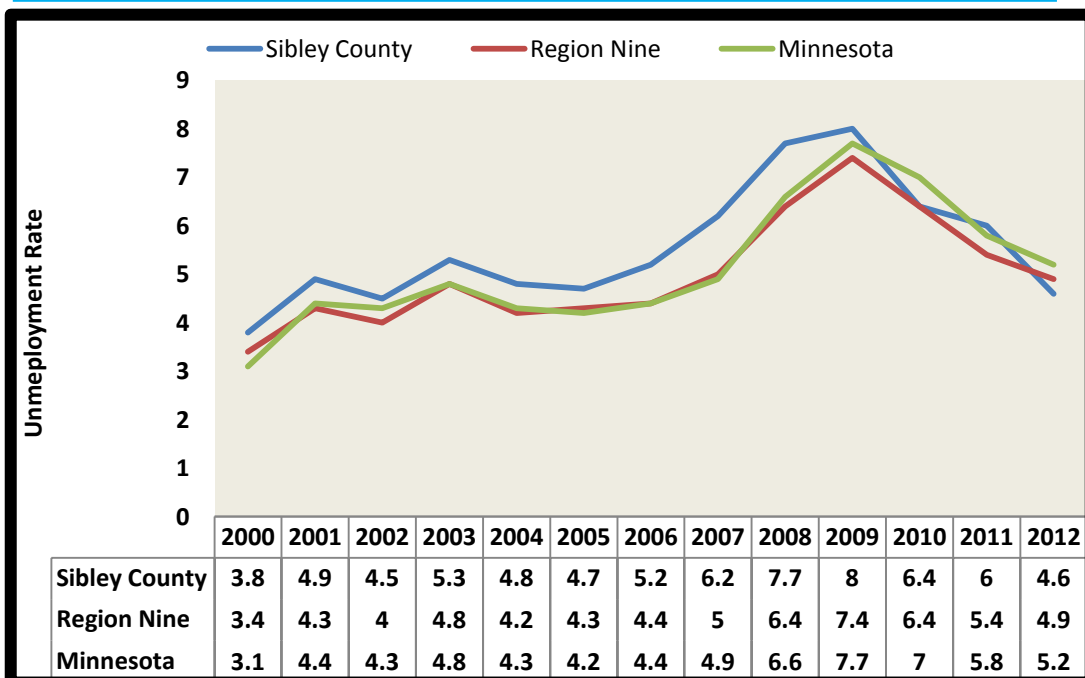
- ❖ Total labor force population is expected to increase every five years at a rate of between 0.05 and 1 per cent till 2025 when it starts decreasing every five years at a rate of between 1 and 2 per cent.
- ❖ The County's unemployment rate, which was higher than the State's prior to 2010, is decreasing and now 0.6 per cent lower than the State's.
- ❖ An individual earns about 12 per cent less annually of what is averagely earned by a person statewide (using the 2011 per capita income statistics).

### COUNTY'S LABOR FORCE OUTLOOK BY AGE COHORTS (2005-2035)



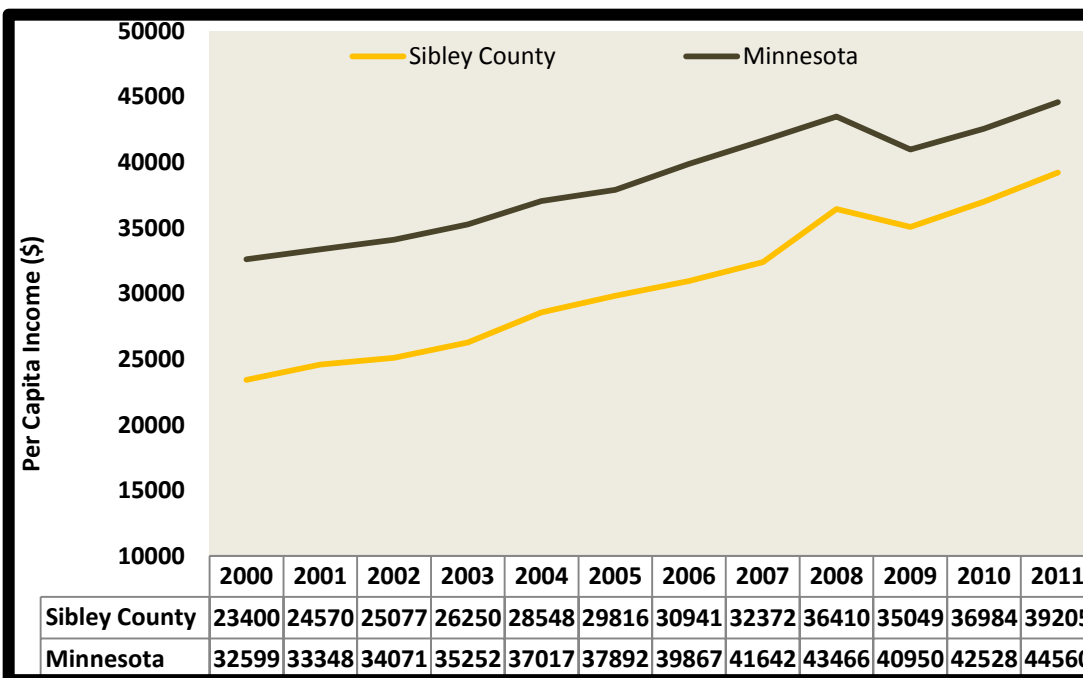
Data Source: MN DEED, 2012

### COMPARING UNEMPLOYMENT RATES FOR BROWN COUNTY, REGION NINE AND STATE (2000 - 2012)



Data Source: MN DEED, 2012

### TREND IN COUNTY'S PER CAPITA INCOME (2000-2011)

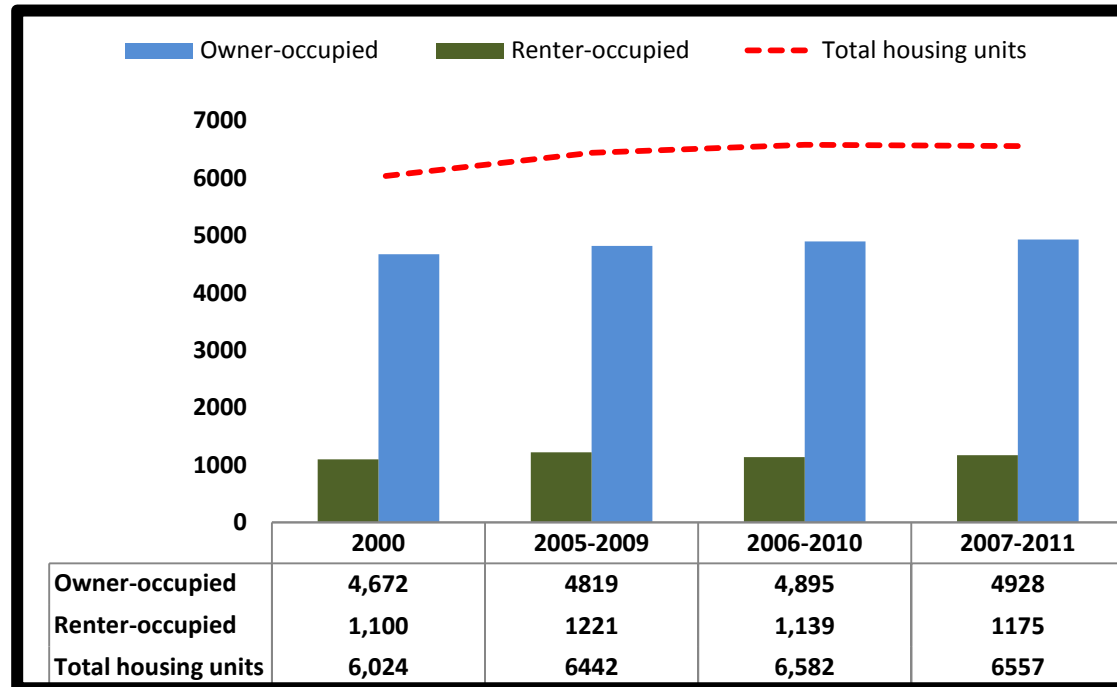


Data Source: US Bureau of Economic Analysis, 2012

### COST OF LIVING

## COUNTY'S HOUSING PROFILE

### HOUSING UNITS: TOTAL, OWNER AND RENTER UNITS (2000-2011)

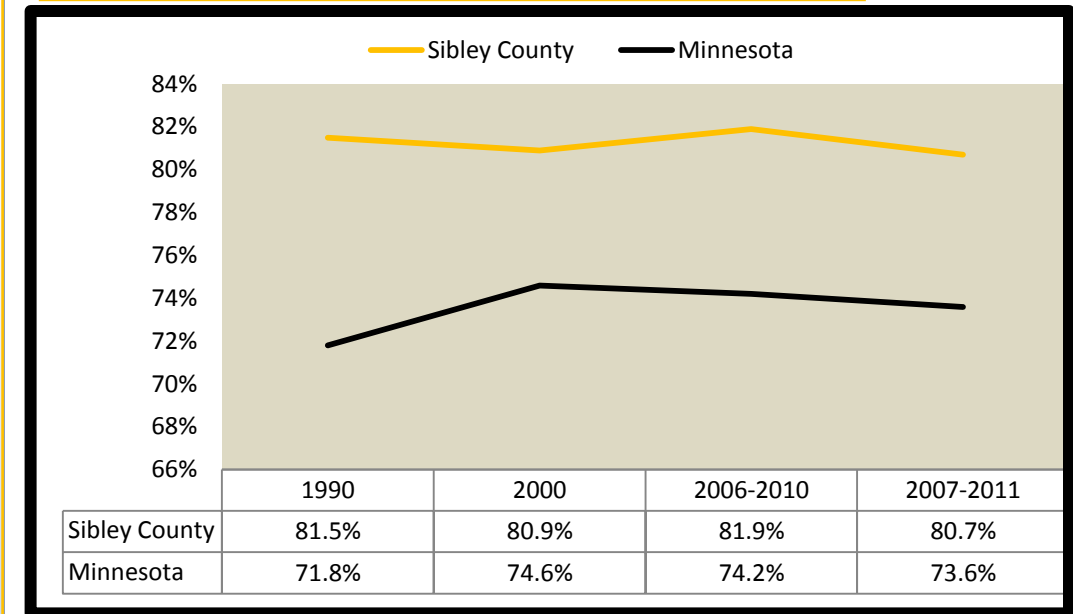


Data Source: MN State Demographic Center, 2012

### KEY HIGHLIGHTS

- ❖ Housing units increased by 8.8 per cent in 2011 (compared with the number of housing units in 2000). Although both owner-occupied and renter-occupied housing units have increased since 2000, the increase in owner-occupied housing units is the most significant.
- ❖ The vacancy rates for both owner and renter occupied units have also decreased in 2011, with renter-occupied units having the most significant decrease.
- ❖ Although with a decrease in 2011, homeownership rate in the County has been higher than that of the State since the 1990s.
- ❖ Annually, rent cost per household represents 34% of the total housing cost paid by a homeowner.

### TREND IN COUNTY'S HOMEOWNERSHIP RATE



Data Source: Compiled from Decennial Census and U.S. Census Bureau, American Community Survey

### OTHER HOUSING CHARACTERISTICS (2000-2011)

Characteristics	2000	2005-2009	2006-2010	2007-2011
Occupied housing units	5,772	6,040	6,034	6,103
Vacant housing units	252	402	548	454
Population in owner-occupied housing units	12,580	12,021	12,495	12,089
Population in renter-occupied housing units	2,452	2,980	2,501	2,663
Homeowner vacancy rate (percent)	1.3	-	1.9	1.4
Rental vacancy rate (percent)	4.6	-	11	6.4
Average household size of owner-occupied units	2.69	2.49	2.55	2.45
Average household size of renter-occupied units	2.23	2.44	2.2	2.27

Data Source: US Census Bureau, 2012

### HOUSING EXPENDITURE FOR SIBLEY COUNTY (2012)

	\$ PER HOUSEHOLD	TOTAL \$000'S
Mortgage Interest	\$3,812	\$22,598
Property Taxes	\$1,675	\$9,930
Miscellaneous Owned Dwelling Costs	\$1,295	\$7,683
Rental Costs	\$2,300	\$13,636
Other Lodging	\$522	\$3,095

Data Source: MN DEED, 2012(mnprospector.com)