

		this plan and updates to it will be open for public attendance and comment.
F.	Flyers	Informational pieces will be developed when appropriate and distributed to educate the public and professionals on hazard mitigation planning and process.
G.	Brochures	Informational pieces will be developed when appropriate and distributed to educate the public and professionals on hazard mitigation planning and process.
H.	City Websites	Plans were used by jurisdictions on their websites, but none in Le Sueur County. However, all jurisdictions in the County will be able to have a plan on their website or link to the county or region website.
I.	Region Website	Plans will be made available on Region Nine's website including steps during the planning process. Therefore, the public can access the plan for their purposes/research.

APPENDICES

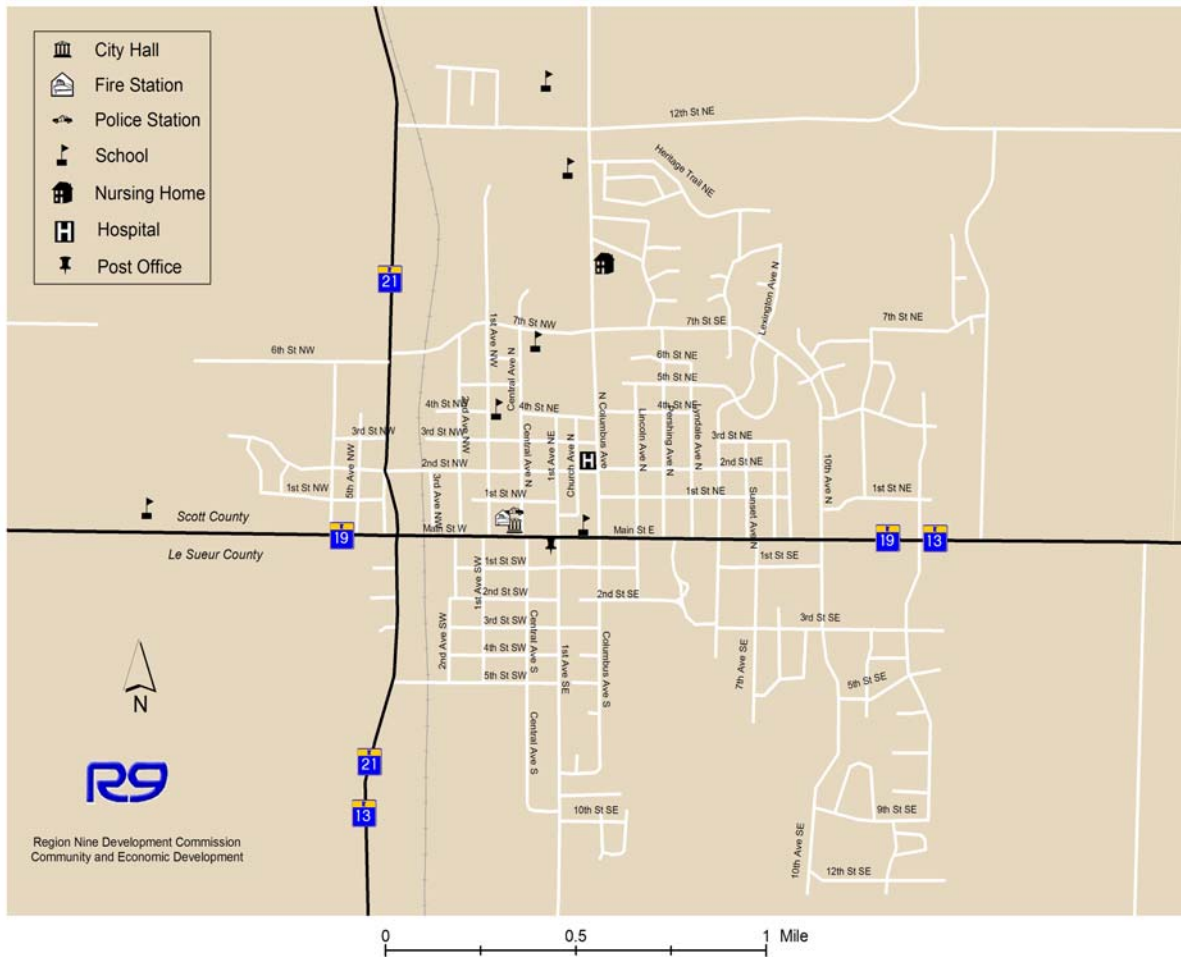
Appendices to the Le Sueur County All-Hazard Mitigation Plan include returned community questionnaires, inventories of emergency response capabilities, and the full set of Le Sueur County informational maps as prepared by and/or for Region Nine Development Commission.

CITY OF NEW PRAGUE

Critical Facilities

New Prague maintains a police department that is nine full-time officers strong, with three part-time officers also in rotation. In the event of an emergency, New Prague can employ two water department trucks, six electric trucks, four trailers, two ambulances, seven police vehicles including a snowmobile and trailer, fire trucks and equipment, street sweepers, loaders, several dump trucks, and pickup trucks.

Critical Facilities - City of New Prague



City of New Prague

Mark Vosejka, Chief of Police
118 Central Avenue North
New Prague MN 56071
PH: 952.758.2791 FX: 952.758.6279
moosejka@ci.newprague.mn.us

1. Has your city adopted the Minnesota State Building Code?

Yes

2. What hazards concern your community the most and why?

Hazardous Materials – concern because there is a lot of semi traffic through the community and some industries in town use hazardous materials in production.

Thunderstorms/Tornadoes – unpredictable and location near river valley.

3. What equipment does your city have that can be used in the event of a disaster?

Equipment is listed above the map of the city.

4. How many full-time and part-time police officers does your city have?

Full Time: 9 Part Time: 3

5. How many homes and business in your city are located in the 100-year floodplain?

One home, there may be others that are unable to be determined without significant research (but not many).

6. What bridges and/or streets in your city are vulnerable to flooding?

Main Street West at Third Avenue NW, Atton Avenue near Seventh Street NE, Seventh Street NE at Columbus Avenue, Lincoln Avenue North at Fourth Street NE, Main Street at Memorial Park and First Street NW at First Avenue NW

7. What public education and outreach programs dealing with disaster awareness, safety and preparedness are available to your city residents?

What departments and/or agencies are responsible for the organization of these programs?

Fire, Ambulance and Police give presentations to organizations upon request.

8. What type of act or terrorism concerns your city the most and why?

Biological/Chemicals – the ease of obtaining and distributing these. The large facilities, schools, hospital that we have in the community.

Infrastructure – the ease of access to some facilities.

CITY OF CLEVELAND

Critical Facilities

The city employs three part-time law enforcement officers and, in the event of an emergency, has a well-equipped fire department and generators.

Critical Facilities - City of Cleveland



City of Cleveland

Glenn Beer, Assistant Fire Chief & Nancy Kastens, Council
PO Box 309
Cleveland MN 56017
PH: 507.931.6380 FX: 507.931.5353

1. Has your city adopted the Minnesota State Building Code?

No comment

2. What hazards concern your community the most and why?

Fires – no water tower at this time
Hazardous Materials
Tornadoes
Traffic on Highway 99

3. What equipment does your city have that can be used in the event of a disaster?

All fire and rescue equipment and other *equipment are listed above the map of the city.*

4. How many full-time and part-time police officers does your city have?

Part-Time: 3

5. How many homes and business in your city are located in the 100-year floodplain?

None

6. What bridges and/or streets in your city are vulnerable to flooding?

First Street, Washington Street

7. What public education and outreach programs dealing with disaster awareness, safety and preparedness are available to your city residents?

What departments and/or agencies are responsible for the organization of these programs?

County provides education

8. What type of act or terrorism concerns your city the most and why?

No comment

CITY OF LE SUEUR

Critical Facilities

There are seven full-time police officers employed in Le Sueur, including the police chief. Several part-time officers are also on hand. In the event of an emergency, the city has dump trucks, electric line trucks, fire trucks, ambulances, skid loaders, payloaders, pick-up trucks, and chain saws.

Critical Facilities - City of Le Sueur



City of LeSueur

Richard Almich, City Administrator

PO Box 176

LeSueur MN 56058

PH: 507.665.6401 FX: 507.665.3813

1. Has your city adopted the Minnesota State Building Code?

No comment

2. What hazards concern your community the most and why?

Fires, Floods, Hazardous Materials, Multi-Hazard and Tornadoes

3. What equipment does your city have that can be used in the event of a disaster?

Dump trucks, electric line and fire trucks, ambulances, skid loaders, pay loader and pickup trucks.

4. How many full-time and part-time police officers does your city have?

Full Time: 7 (including police chief) Part Time: 7

5. How many homes and business in your city are located in the 100-year floodplain?

None

6. What bridges and/or streets in your city are vulnerable to flooding?

Highway 93 Bridge

7. What public education and outreach programs dealing with disaster awareness, safety and preparedness are available to your city residents?

- a. Annual community disaster/emergency preparedness drill
- b. Emergency operations plan

What departments and/or agencies are responsible for the organization of these programs?

- a. Safety coordinator
- b. City administrator responsible for overall management of plan.

8. What type of act or terrorism concerns your city the most and why?

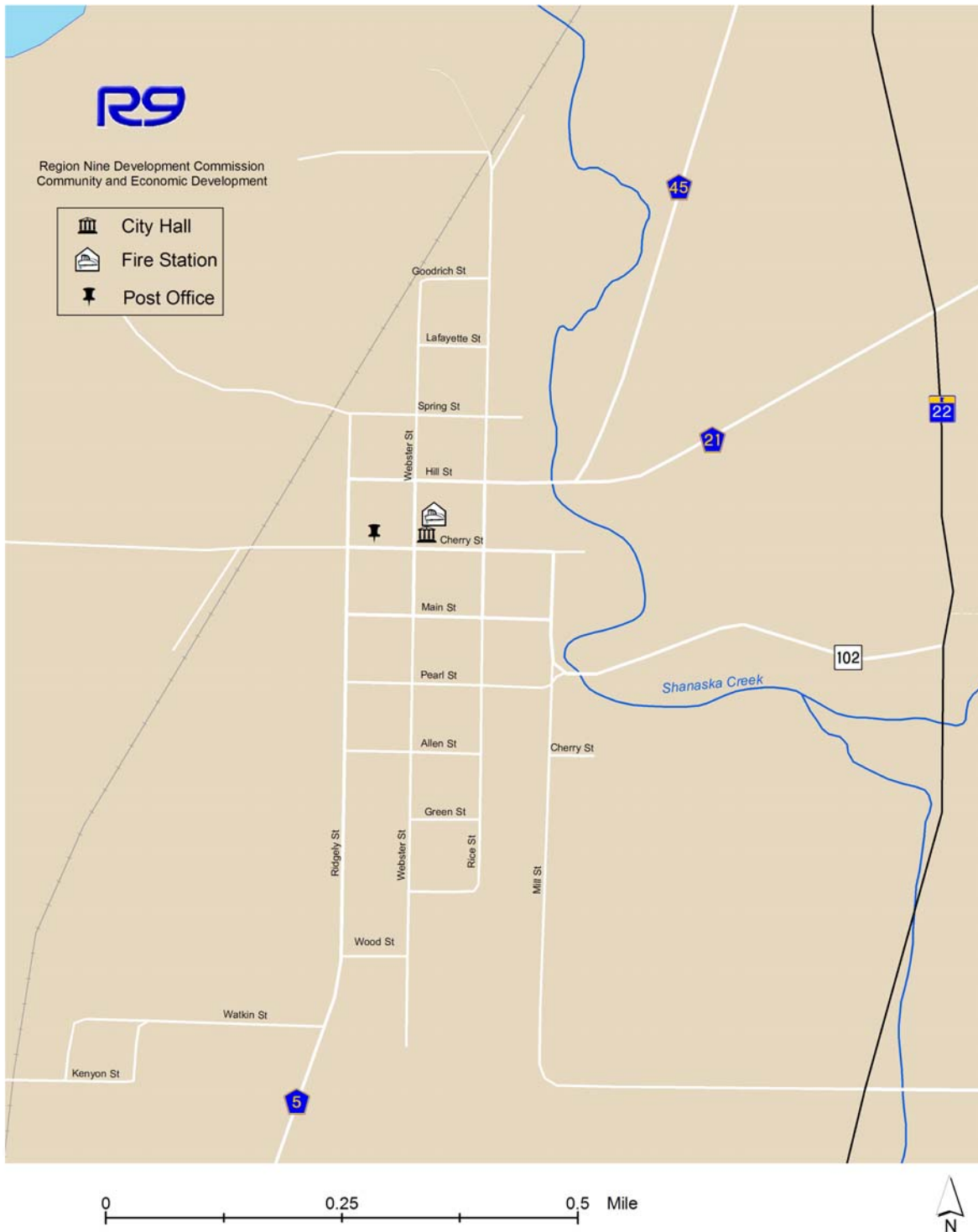
None

CITY OF KASOTA

Critical Facilities

There are no police officers in Kasota.

Critical Facilities - City of Kasota



City of Kasota

PO Box 218
Kasota MN 56050
PH: 507.931.3290 FX: 507.931.3290

1. Has your city adopted the Minnesota State Building Code?

No

2. What hazards concern your community the most and why?

Extreme Heat, Fires, Hazardous Materials, Thunderstorms, Tornadoes and Winter Storms

3. What equipment does your city have that can be used in the event of a disaster?

Equipment is listed above the map of the city.

4. How many full-time and part-time police officers does your city have?

None

5. How many homes and business in your city are located in the 100-year floodplain?

Approximately 10 homes, no businesses

6. What bridges and/or streets in your city are vulnerable to flooding?

Bridges on Pear Street

7. What public education and outreach programs dealing with disaster awareness, safety and preparedness are available to your city residents?

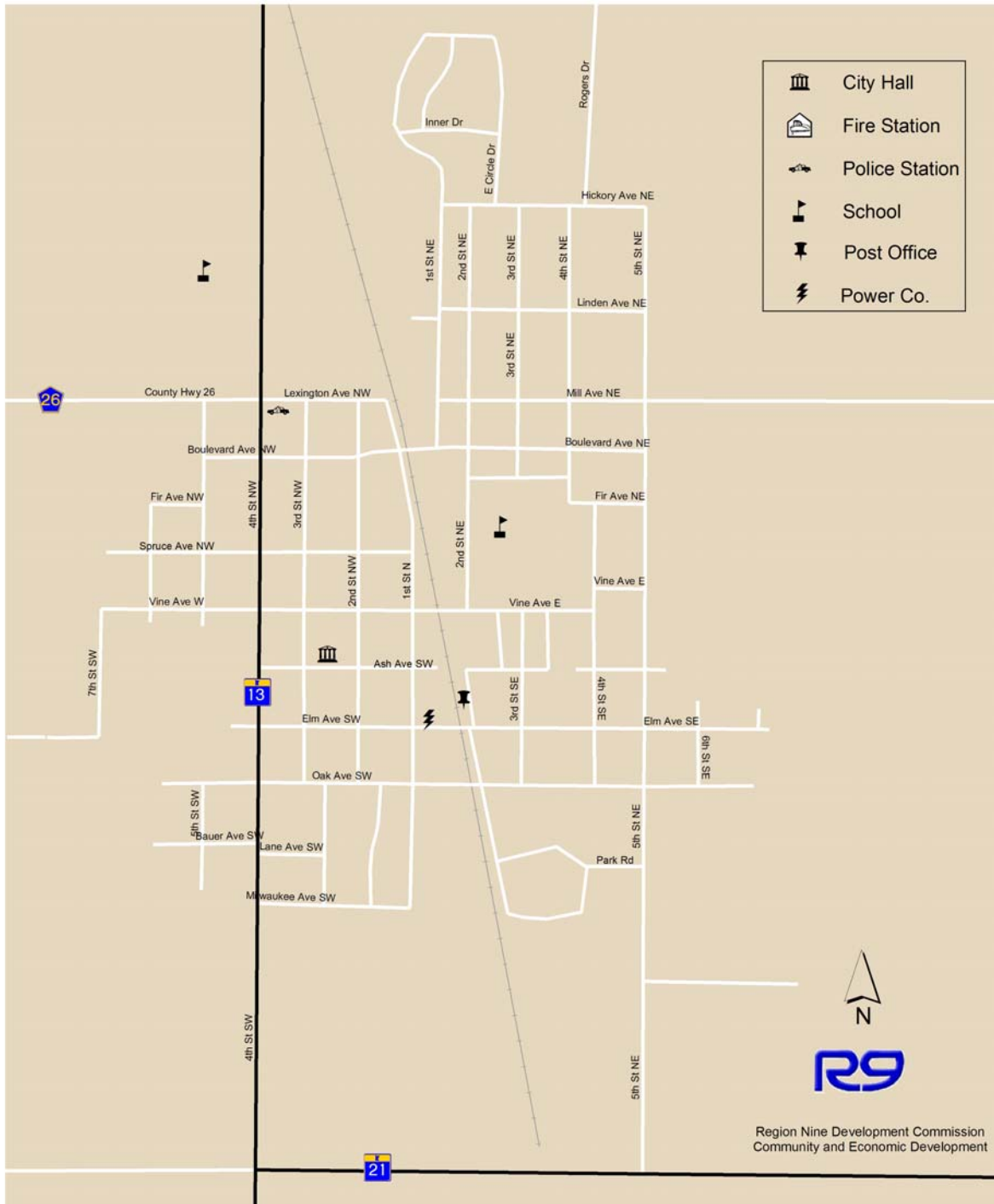
N/A

What departments and/or agencies are responsible for the organization of these programs?

8. What type of act or terrorism concerns your city the most and why?

Chemical

Critical Facilities - City of Montgomery



City of Montgomery

Terry Hayes & Bonnie Sery

201 Ash Avenue West

Montgomery MN 56069

PH: 507.364.8888 FX: 507.364.5371

1. Has your city adopted the Minnesota State Building Code?

Yes

2. What hazards concern your community the most and why?

Fires, Thunderstorms, Tornadoes and Winter Storms

3. What equipment does your city have that can be used in the event of a disaster?

Emergency service vehicles, front-end loader, dump trucks, backhoe and portable generators.

4. How many full-time and part-time police officers does your city have?

No comment

5. How many homes and business in your city are located in the 100-year floodplain?

None

6. What bridges and/or streets in your city are vulnerable to flooding?

No bridges, Vine and Third Street intersection.

7. What public education and outreach programs dealing with disaster awareness, safety and preparedness are available to your city residents?

Tornado awareness drills and fire drills at schools

What departments and/or agencies are responsible for the organization of these programs?

Police/fire departments

8. What type of act or terrorism concerns your city the most and why?

Infrastructure

City of LeCenter

Chris Collins, City Clerk

10 West Tyrone Street

LeCenter MN 56057

PH: 507.357.4450 FX: 507.357.6888

collinschris@yahoo.com

1. Has your city adopted the Minnesota State Building Code?

Yes

2. What hazards concern your community the most and why?

Fires – in the downtown area where all the businesses are connected with common walls

Hazardous Materials – from the industrial park within the city limits

Tornadoes – located in tornado alley was they spin off from the Minnesota River

3. What equipment does your city have that can be used in the event of a disaster?

Equipment is listed above the map of the city.

4. How many full-time and part-time police officers does your city have?

Full Time: 3

Part Time: 5

5. How many homes and business in your city are located in the 100-year floodplain?

No comment

6. What bridges and/or streets in your city are vulnerable to flooding?

Only one intersection of south Waterville Avenue and East Sharon Street.

7. What public education and outreach programs dealing with disaster awareness, safety and preparedness are available to your city residents?

Monthly siren test is only program to educate citizens.

What departments and/or agencies are responsible for the organization of these programs?

LeCenter Fire Department, LeCenter Rescue Squad, LeCenter Ambulance, LeCenter Emergency Management

8. What type of act or terrorism concerns your city the most and why?

Infrastructure – it would be very easy to mess with our water supply and wwtp.

Physical – because we are county seat with courthouse.

CITY OF KILKENNY

Critical Facilities

There are no police officers employed in Kilkenny. In the event of an emergency, the city has access to two tanker trucks, a fire truck, one rescue vehicle, and three trucks.

City of Kilkenny

Donna Knish, City Clerk

41122 Kilkenny Road

Kilkenny MN 56052

PH: 507.595.2444 FX: 507.595.2444

ddknish@frontiernet.net

1. Has your city adopted the Minnesota State Building Code?

No

2. What hazards concern your community the most and why?

Fires – because home are so close together

Hazardous Materials – rollovers from agricultural materials, possible meth labs

Thunderstorms & Tornadoes – many homes without basements and businesses no place to go for safety

Winter Storms – power outage, problems with sewers

3. What equipment does your city have that can be used in the event of a disaster?

Equipment is listed above the map of the city.

4. How many full-time and part-time police officers does your city have?

None

5. How many homes and business in your city are located in the 100-year floodplain?

None

6. What bridges and/or streets in your city are vulnerable to flooding?

None

7. What public education and outreach programs dealing with disaster awareness, safety and preparedness are available to your city residents?

Warning siren only

What departments and/or agencies are responsible for the organization of these programs?

8. What type of act or terrorism concerns your city the most and why?

None

CITY OF WATERVILLE

Critical Facilities - City of Waterville



City of Waterville

Teresa Hill, Administrator
200 South Third Street
Waterville MN 56096
PH: 507.362.8300 FX: 507.362.8835
cityofwaterville@frontiernet.net

1. Has your city adopted the Minnesota State Building Code?

No

2. What hazards concern your community the most and why?

Fires, Floods, Terrorism, Tornadoes

3. What equipment does your city have that can be used in the event of a disaster?

Equipment is listed above the map of the city.

4. How many full-time and part-time police officers does your city have?

Full Time: 4 Part Time: 2 (as needed)

5. How many homes and business in your city are located in the 100-year floodplain?

A large amount of our city is impacted by 500 or 100 year flood.

6. What bridges and/or streets in your city are vulnerable to flooding?

Sakatah Blvd, Lillian Street, Virginia Street, South Tetonka Bay Drive, Sixth Street Bridge and Cannon River Bridge

7. What public education and outreach programs dealing with disaster awareness, safety and preparedness are available to your city residents?

None

What departments and/or agencies are responsible for the organization of these programs?

8. What type of act or terrorism concerns your city the most and why?

Chemical – water supply contamination

City of Waterville

Summary of Potential Hazards

1. Floods

Vulnerability: Low Risk

2. Tornado

No comments

3. Terrorism, water ways and water treatment

Vulnerability: Medium Risk

Potential Impact: Low

City of Heidelberg

Dan Tousley, LeSueur County Emergency Management
Rep. City of Heidelberg.
PH: 507-357-2251 or 507-357-4440

1. Storms

Natural disasters (tornado, wind, etc.)

Category:

Vulnerability: High Risk

2. Transportation

County Road 30 (Heidelberg's Tared Road) high volume of trucks

Category:

Vulnerability: High Risk

Priority Hazards and Steps

1. Hazard: Storms
Steps: Work with LeSueur County Emergency Management to ensure that the Sky Warn system is up to date.
2. Hazard: Transportation
Steps: Work with LeSueur County Sheriff's to ensure traffic enforcement

City of Elysian

Patricia Nusbaum
130 Main Street East
P.O. Box 246
Elysian, MN 56028
PH: 507.267.4708 FX: 507.267.4750

1. Has your city adopted the Minnesota State Building Code?

Yes (contract with a building inspection firm)

2. What hazards concern your community the most and why?

- MN State Highway #60 traffic
- Tornadoes
- Hazardous material being carried on Hwy # 60

3. What equipment does your city have that can be used in the event of a disaster?

Siren, emergency vehicles, Emergency Management services, fire department, and city vehicles.

4. How many full-time and part-time police officers does your city have?

One – we contract with Le Sueur County Sheriff’s Department

5. How many homes and business in your city are located in the 100-year floodplain?

None

6. What bridges and/or streets in your city are vulnerable to flooding?

None

7. What public education and outreach programs dealing with disaster awareness, safety and preparedness are available to your city residents?

None

8. What departments and/or agencies are responsible for the organization of these programs?

N/A

9. What type of act or terrorism concerns your city the most and why?

Unknown

1. Storms

- Natural disasters (tornadoes)
Vulnerability: High Risk

Transportation

- Roll over of vehicles carrying hazard material. Highway #60 cuts through our business district. If an accident happens, the potential problem would vary depending on the wind, and the type of chemical being carried.
Vulnerability: Med. Risk